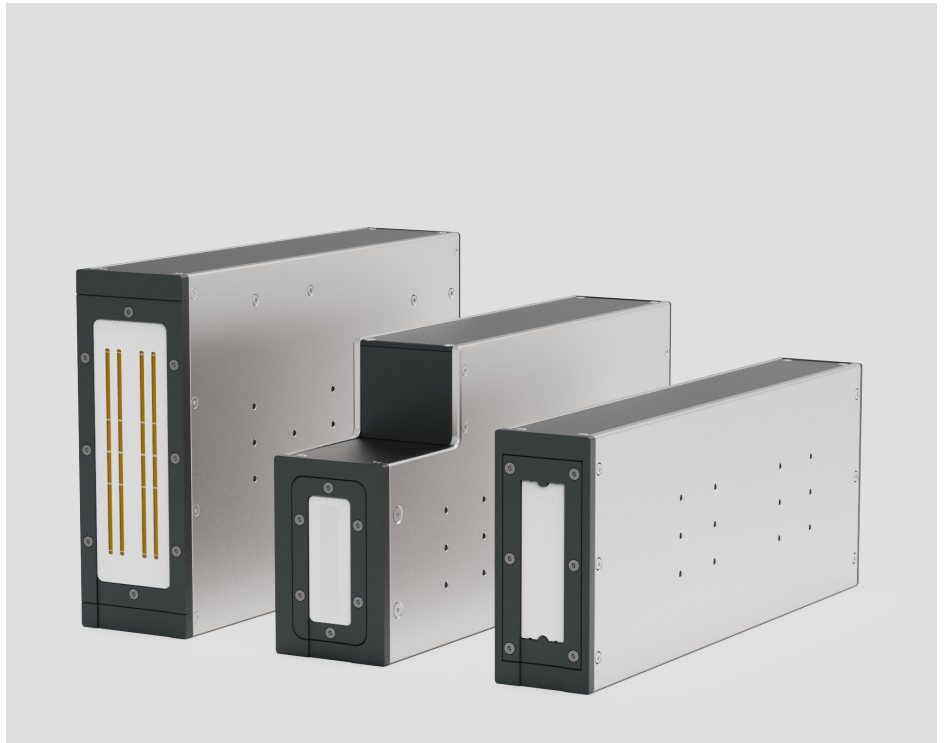
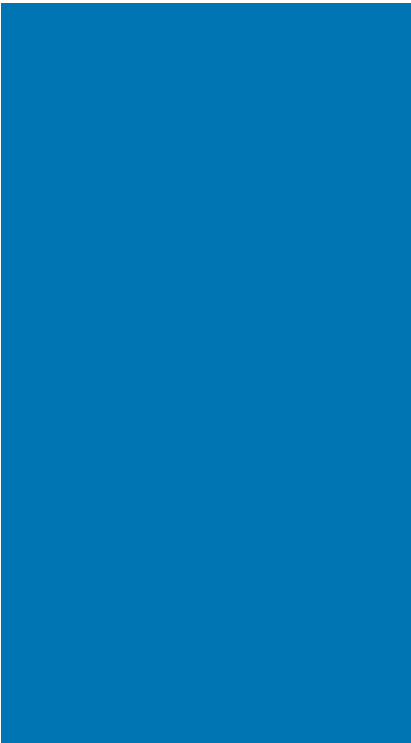
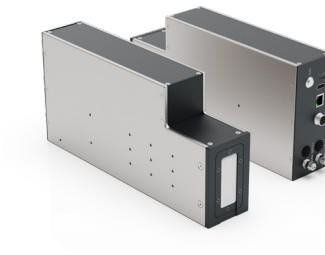


YEACODE

7 Series Recirculating Inkjet System

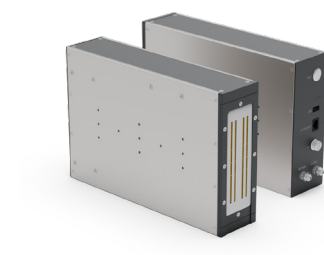


Recirculating Piezoelectric Printhead



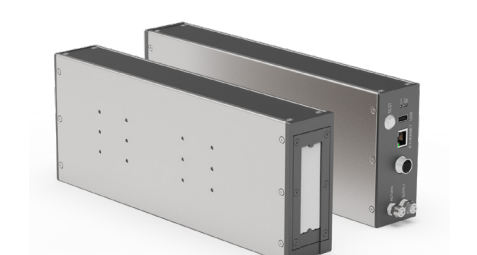
7TA

Recirculating Printhead
Throw Distance: Up to 10-20mm
Resolution: 600DPI
Max Print Height: 53.9mm



7SA

Recirculating Printhead
Throw Distance: Up to 30mm
Resolution: 360DPI
Max Print Height: 108.3mm



7RA

Recirculating Printhead
Throw Distance: Up to 10mm
Resolution: 600DPI
Max Print Height: 54.1mm



Specifications

Printhead	7TA	7SA	7RA
Technology	Recirculating Piezoelectric Printhead		
Print Engine	Toshiba	Seiko RC1536	Ricoh G5F
Printing Speed	60m/min	118m/min	220m/min
Throw Distance	Up to 10-20mm	Up to 30mm	Up to 10mm
Resolution	600DPI	360DPI	600DPI
Print Height	53.9mm	108.3mm	54.1mm
Ink Supply	Recirculating Ink Supply System		
Installation	Downward, Sideward, Upward, Horizontal etc.		
Ink Type	UV ink, Oil-based ink		
Operating Temperature	15°C-40°C		
Storage Temperature	5°C-45°C		
Dimensions	340*155*65mm	190*290*65mm	344*129*54mm
Certifications	CE、FCC		

Tips: The maximum throw distance is obtained from laboratory tests; in practical applications, it is also related to the printed content, ink used, production line speed, and installation method.

Ink Supply System



Recirculating Ink Supply System (VRISS)



24-hour continuous operation



Nozzle-level ink recirculation



LED real-time status display



Precise pressure control

UV LED Lamp



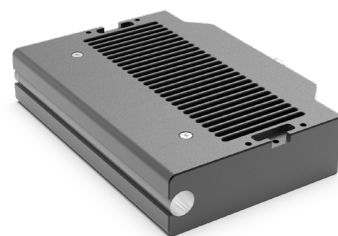
9LH5656

Applicable Printhead: 7TA 7RA
Curing Power: 500W
Illumination length: 56mm
Illumination Height: 56mm
Dimensions: 135*90*80mm
Function: High-Power Curing



9LH28112

Applicable Printhead: 7SA
Curing Power: 500W
Illumination length: 28mm
Illumination Height: 112mm
Dimensions: 140*112*28mm
Function: High-Power Curing



UVLH10120

Applicable Printhead: 7SA 7TA 7RA
Curing Power: 100W
Illumination length: 10mm
Illumination Height: 120mm
Dimensions: 120*98*25mm
Function: Low-Power Pre-Curing

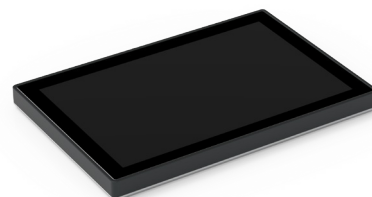
7 Series Controller



71CT Controller



72CT Controller



10-inch Display

Specifications

Model	71CT Controller	72CT Controller
Operating System	Android(Controller), Windows(PC).	
Ports	1) 1 Printhead Port 2) 3 USB Ports 3) I/O_1: Supports connection to RS485, alarm light, and RS232 4) I/O_2: Supports connection to photocell, encoder, and PLC 5) Ethernet Port 6) LCD Port: For connecting a 10-inch LCD screen 7) LH1/2: For connecting 500W high-power UV LED lamps 8) LH3/4: For connecting 100W low-power pre-curing UV LED lamps	1) 2 Printhead Ports 2) 3 USB Ports 3) I/O_1: Supports connection to RS485, alarm light, and RS232 4) I/O_2: Supports connection to photocell, encoder, and PLC 5) Ethernet Port 6) LCD Port: For connecting a 10-inch LCD screen 7) LH1/2: For connecting 500W high-power UV LED lamps 8) LH3/4: For connecting 100W low-power pre-curing UV LED lamps
Display	LCD screen: 10 inches	
Language	English(Default), Chinese, and support custom installation	
Fonts	DroidSansFallback, Arial, and support custom installation of any ttf format font	
Input Methods	Support any custom installation of Android input method	
Object Type	Text, Barcode, Image, Shape, Table	
Source Type	Text, Date&Time, Shift, Counter, Manufacture Info, Database Text, Dynamic Text, Database Image, Dynamic Image, Company Logo	
Barcode Types	Linear Barcodes: C25INTER, EAN8/EAN13, GS1 EAN128, CODE39, CODE93, CODE128, CODE128A, CODE128B, CODE128C, UPCA, UPCE, ITF14, RSS14, RSS14STACK, RSS14STACK_OMNI, RSS_LTD, RSS_EXP, RSS_EXPSTACK; Matrix Barcodes: QRCODE, GS1 QRCODE, PDF417, DataMatrix, GS1 DataMatrix, GridMatrix, AZTEC Code;	
Database	Text, Excel, Access, SQL Server	
Power	110-240V In, 24V 5A Out	
Operating Environment	9°F (15°C) -104°F (40°C)	
Storage Environment	41°F (5°C) -113°F (45°C)	
Hardware Dimension	222*143*38mm	
Certifications	CE, FCC	



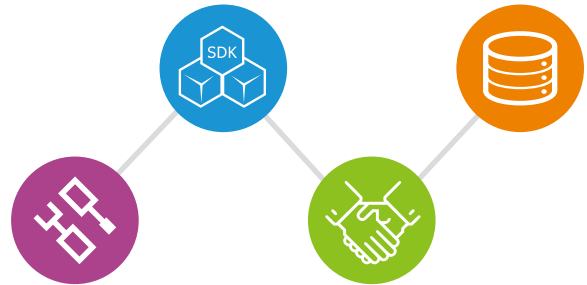


User-friendly Interface

10-inch capacitive color touchscreen, Android based interface, easy access to core functions, support various languages and input methods.

Various software/hardware interface

Provide software development kits, and support various hardware interfaces (PLC, RS232, RS485, Ethernet, etc.) to fulfill various integration needs.



Meet Customized Needs

Open platform and advanced system structure enable quick response to tailor-made various plug-ins and customized printing needs as requested.



Date & Time



Numeral System



Source

SDK Development Kit

- Support multiple development languages
- Support various hardware interfaces
- Enable easy and quick integration
- Provide DEMO debugging tool with multiple protocols



C#



C++



TCP



PHP



Http



Python



RS232



Java



PC Software

- Message creating, editing for quick operation
- Device remote control
- Multiple printers synchronous management
- Printing preview assist quick development

Easy Label Replacement

YEACODE Windows driver is compatible with various label design software, allowing easy replacement of existing label equipment without changing operational habits. The upgrade from labeling to inkjet printing enhances efficiency, flexibility, and reduces material costs compared to traditional labeling methods.



Ink Recirculation System

The ink recirculation at the printhead level ensures stable, high-quality printing. It removes impurities and bubbles from the ink lines, keeping nozzles in optimal condition while minimizing downtime and manual intervention.



Enhanced Environmental Adaptability

With the ink recirculation system, the printhead achieves a longer throw distance, effectively preventing nozzle damage and dust interference in industrial environment like high dust and temperature. The increased throw distance also enables stable printing on curved and irregular surfaces.

